

THE LIMBERLOST

FOXCROSSING
ESTATES

1,470 SQ. FT.

3 Bedrooms, 2 Bathrooms



ARIA
CUSTOM HOMES

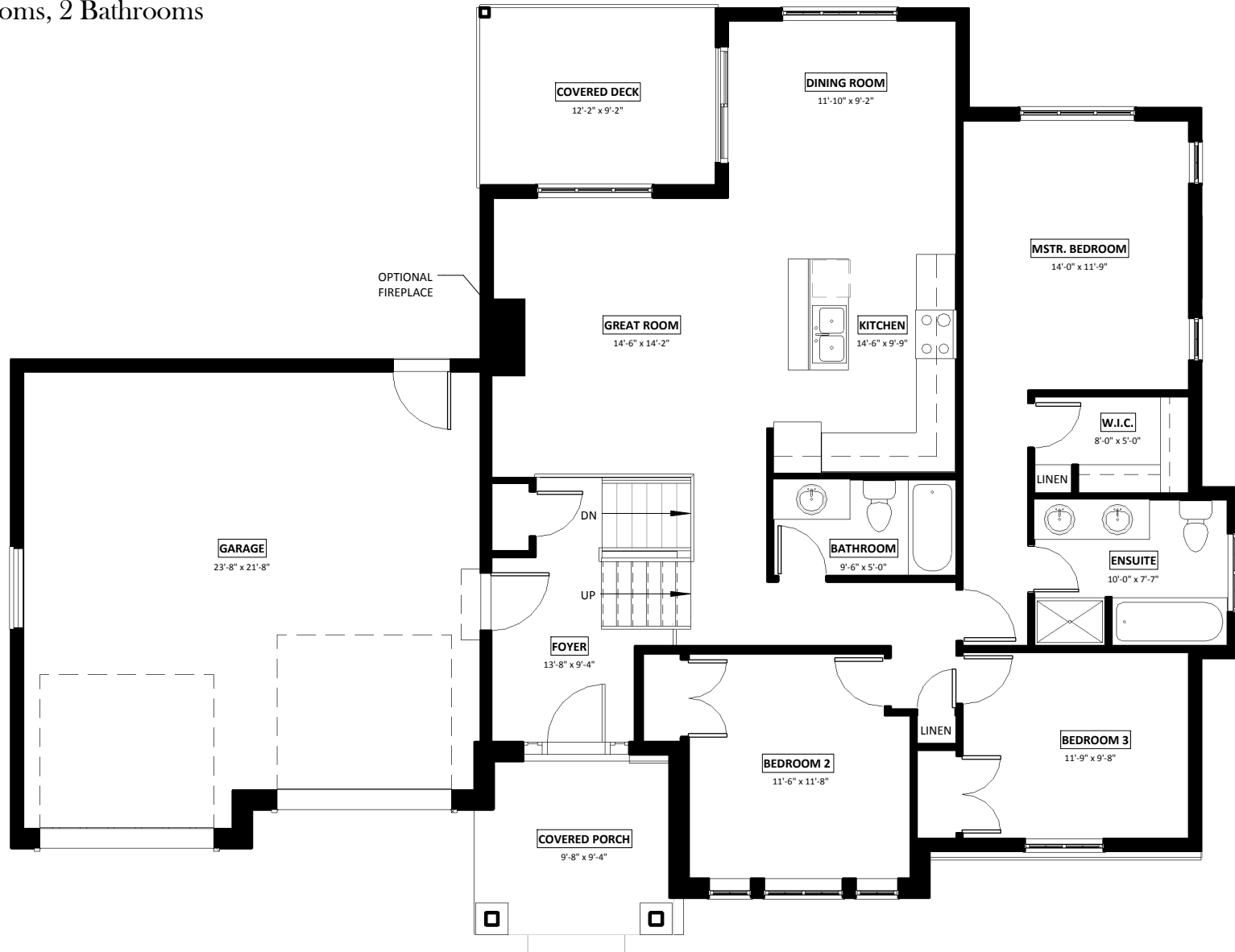
STREET VIEW PERSPECTIVE

All material, specifications and floor plans are subject to change without notice. House renderings are artists' conception and may vary in detail from actual construction. Illustrations may be shown with options outside of our standard features. All floor plans are approximate dimensions. Actual usable floor space may vary from the stated floor area. Colour representations are approximate and subject to change. Municipal Architectural Controls may require modification to exterior material use, exterior house design, appearance and colours. Window sizes may change from floor to floor. Lot setbacks, easements and overall grading are at the discretion of the builder. Subject to change E. & O.E. ©Aria Custom Homes

THE LIMBERLOST

1,470 SQ. FT.

3 Bedrooms, 2 Bathrooms



MAIN FLOOR PLAN

All material, specifications and floor plans are subject to change without notice. House renderings are artists' conception and may vary in detail from actual construction. Illustrations may be shown with options outside of our standard features. All floor plans are approximate dimensions. Actual usable floor space may vary from the stated floor area. Colour representations are approximate and subject to change. Municipal Architectural Controls may require modification to exterior material use, exterior house design, appearance and colours. Window sizes may change from floor to floor. Lot setbacks, easements and overall grading are at the discretion of the builder. Subject to change E. & O.E. ©Aria Custom Homes