

THE SOUTHWOOD

FOX CROSSING
ESTATES

1,835 SQ. FT.

3 Bedrooms, 2 Bathrooms



ARIA
CUSTOM HOMES

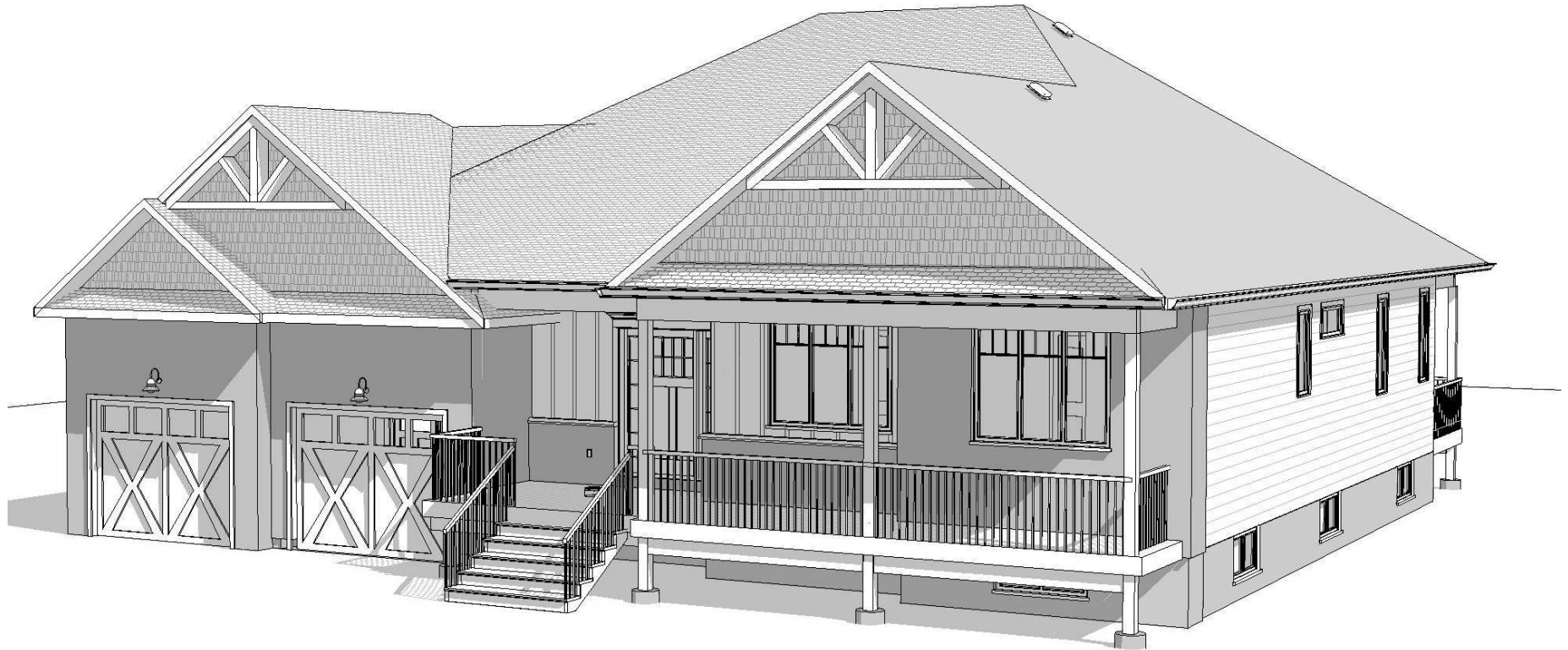
STREET VIEW PERSPECTIVE

All material, specifications and floor plans are subject to change without notice. House renderings are artists' conception and may vary in detail from actual construction. Illustrations may be shown with options outside of our standard features. All floor plans are approximate dimensions. Actual usable floor space may vary from the stated floor area. Colour representations are approximate and subject to change. Municipal Architectural Controls may require modification to exterior material use, exterior house design, appearance and colours. Window sizes may change from floor to floor. Lot setbacks, easements and overall grading are at the discretion of the builder. Subject to change E. & O.E. ©Aria Custom Homes

THE SOUTHWOOD - OPTION 'B'

1,835 SQ. FT.

3 Bedrooms, 2 Bathrooms



ARIA
CUSTOM HOMES

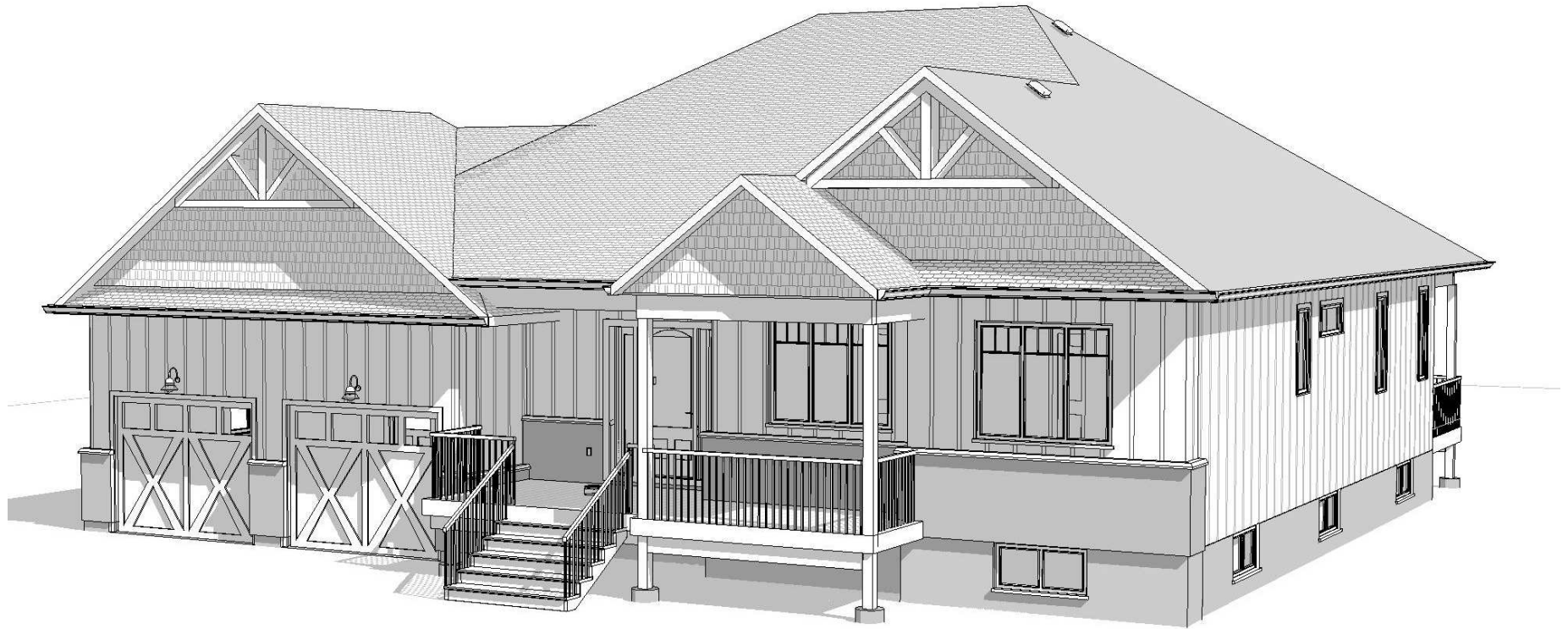
STREET VIEW PERSPECTIVE

ALL MATERIAL, SPECIFICATIONS AND FLOOR PLANS ARE SUBJECT TO CHANGE WITHOUT NOTICE. HOUSE RENDERINGS ARE ARTISTS' CONCEPTION AND MAY VARY IN DETAIL FROM ACTUAL CONSTRUCTION. ILLUSTRATIONS MAY BE SHOWN WITH OPTIONS OUTSIDE OF OUR STANDARD FEATURES. ALL FLOOR PLANS ARE APPROXIMATE DIMENSIONS. FLOOR PLANS SHOWN ARE BASE DESIGN LAYOUTS AND MAY NOT REFLECT ALL EXTERIOR OPTIONS FOR THE PARTICULAR MODEL SHOWN. ACTUAL USABLE FLOOR SPACE MAY VARY FROM THE STATED FLOOR AREA COLOUR REPRESENTATIONS ARE APPROXIMATE AND SUBJECT TO CHANGE. MUNICIPAL ARCHITECTURAL CONTROLS MAY REQUIRE MODIFICATION TO EXTERIOR MATERIAL USE, EXTERIOR HOUSE DESIGN, APPEARANCE AND COLOURS. WINDOW SIZES MAY CHANGE FROM FLOOR TO FLOOR. LOT SETBACKS, EASEMENTS AND OVERALL GRADING ARE AT THE DISCRETION OF THE BUILDER. SUBJECT TO CHANGE E. & O.E © ARIA CUSTOM HOMES.

THE SOUTHWOOD - OPTION 'C'

1,835 SQ. FT.

3 Bedrooms, 2 Bathrooms



ARIA
CUSTOM HOMES

STREET VIEW PERSPECTIVE

ALL MATERIAL, SPECIFICATIONS AND FLOOR PLANS ARE SUBJECT TO CHANGE WITHOUT NOTICE. HOUSE RENDERINGS ARE ARTISTS' CONCEPTION AND MAY VARY IN DETAIL FROM ACTUAL CONSTRUCTION. ILLUSTRATIONS MAY BE SHOWN WITH OPTIONS OUTSIDE OF OUR STANDARD FEATURES. ALL FLOOR PLANS ARE APPROXIMATE DIMENSIONS. FLOOR PLANS SHOWN ARE BASE DESIGN LAYOUTS AND MAY NOT REFLECT ALL EXTERIOR OPTIONS FOR THE PARTICULAR MODEL SHOWN. ACTUAL USABLE FLOOR SPACE MAY VARY FROM THE STATED FLOOR AREA COLOUR REPRESENTATIONS ARE APPROXIMATE AND SUBJECT TO CHANGE. MUNICIPAL ARCHITECTURAL CONTROLS MAY REQUIRE MODIFICATION TO EXTERIOR MATERIAL USE, EXTERIOR HOUSE DESIGN, APPEARANCE AND COLOURS. WINDOW SIZES MAY CHANGE FROM FLOOR TO FLOOR. LOT SETBACKS, EASEMENTS AND OVERALL GRADING ARE AT THE DISCRETION OF THE BUILDER. SUBJECT TO CHANGE E. & O.E © ARIA CUSTOM HOMES.

THE SOUTHWOOD

1,835 SQ. FT.

3 Bedrooms, 2 Bathrooms



MAIN FLOOR PLAN

All material, specifications and floor plans are subject to change without notice. House renderings are artists' conception and may vary in detail from actual construction. Illustrations may be shown with options outside of our standard features. All floor plans are approximate dimensions. Actual usable floor space may vary from the stated floor area. Colour representations are approximate and subject to change. Municipal Architectural Controls may require modification in exterior material use, exterior house design, appearance and colours. Window sizes may change from floor to floor. Lot setbacks, easements and overall grading are at the discretion of the builder. Subject to change E. & O.E. ©Aria Custom Homes